

# Merrill Park Elementary School

2017–2018 Annual Education Report for 2016–2017 Progress  
Dr. Lisa Tran; Principal

---



## Annual Education Report

May 18, 2018:

Dear Parents and Community Members:

We are pleased to present you with the Annual Education Report (AER) which provides key information on the 2016-17 educational progress for the Merrill Park. The AER addresses the complex reporting information required by federal and state laws. The school's report contains information about student assessment, accountability, and teacher quality. If you have any questions about the AER, please contact Dr. Lisa Tran for assistance.

The AER is available for you to review electronically by visiting the following web site [www.spsd.net/aer](http://www.spsd.net/aer) or you may review a copy in the main office at your child's school.

For the 2016-17 school year, schools were identified using new definitions and labels as required in the Every Student Succeeds Act (ESSA). A Targeted Support and Improvement (TSI) school is one that has at least one underperforming student subgroup. An Additional Targeted Support (ATS) school is one that has three or more underperforming student subgroups. A Comprehensive Support and Improvement (CSI) school is one whose performance is in the lowest 5% of all schools in the state. Some schools are not identified with any of these labels. In these cases, no label is given.

Our school has not been given one of these labels.

Some key challenges we face are with science. We dropped to 0% on that MStep test. Other challenges we face are in our ELA scores in 4th and 6th grade and Math dropped in 4th and 5th grades. 6th grade females had the largest drop in scores (40%). The possible reason for the drops in 4th and 6th grades could be due to new teachers coming on board during the school year. This year teachers were consistent and will hopefully help with student achievement.

# Merrill Park Elementary School

## 2017–2018 Annual Education Report for 2016–2017 Progress

Dr. Lisa Tran; Principal

This school year we implemented SWPBIS, in order to build a more positive climate in the school. We use **PAWS** as our behavior expectations, which stands for **P**ositive in Attitude, **A**lways Respectful, **W**illing to Learn, and **S**afe. Students earn tickets for showing the positive behavior expectations and can spend them in class or in the Market Place at Merrill Park (MP@MP) It is helping to bring about change in the school.

### PROCESS FOR ASSIGNING PUPILS TO THE SCHOOL

State law requires that we also report additional information.

School attendance boundaries are set by the SPSD Board of Education. Enrollment requests are considered in accordance with the following:

Board Policy 8040 School Admissions

Board Policy 8005 Open Enrollment (for students who reside within district boundaries)

Board Policy 7950 Schools of Choice (for students who reside outside of district boundaries)

### THE STATUS OF THE 3–5 YEAR SCHOOL IMPROVEMENT PLAN

Goals	Progress		
	Getting Started	Implementation	Monitoring
Goal 1: All students at Merrill Park will increase their proficiency in reading and social studies			
Strategy: Professional Learning		x	
Strategy: Best Practices for All Students		x	
Strategy: MTSS for Subgroups			x
Strategy: Parent, School, and Community Partnerships		x	
Goal 2: All students at Merrill Park will increase their proficiency in math			
Strategy: Professional Learning		x	

# Merrill Park Elementary School

## 2017–2018 Annual Education Report for 2016–2017 Progress

Dr. Lisa Tran; Principal

Strategy: Best Practices for All Students		x	
Strategy: MTSS for Subgroups			x
Strategy: Parent, School, and Community Partnerships	x		
Goal 3: Merrill Park Elementary will become a stable and high performing organization to promote the success of all students.			
Strategy: Continuous Growth Model		x	
Strategy: College and Career Ready		x	
Strategy: Safe and Effective Learning Environment		x	
Strategy: Parent, School, and Community Partnerships		x	
Goal 4: All students at Merrill Park will increase their proficiency in writing and social studies.			
Strategy: Professional Learning		x	
Strategy: Best Practices for All Students			x
Strategy: MTSS for Subgroups	x		
Strategy: Parent, school, and Community Partnerships		x	
Goal 4: All students at Merrill Park will increase their proficiency in science			
Strategy: Professional Learning		x	
Strategy: Best Practices for All Students			x
Strategy: MTSS for Subgroups	x		
Strategy: Parent, school, and Community Partnerships	x		

### A BRIEF DESCRIPTION OF OUR SCHOOL

Merrill Park Elementary School is located at 1800 Grout Street which is on the Southwest side of Saginaw, Michigan. We are a neighborhood school; however, we do have some families choosing to open enroll their child/children at our school. We also have families who attend Merrill Park through schools of choice. Our school

# Merrill Park Elementary School

## 2017–2018 Annual Education Report for 2016–2017 Progress

Dr. Lisa Tran; Principal

---

enrollment is constantly fluctuating throughout the school year. We have a great deal of mobility in our student population.

Our current enrollment is 319 students in grades Preschool through sixth grade. Our student population is made up of 51% African Americans, 24% Latinos, 21% Caucasian and 4% Multi. Merrill Park has 147 females, 172 males, 34 students are in special education, 22 students are LEP, and 2 students are homeless. Our staff includes, 1 principal, 1 secretary, 14 teachers grades preschool-sixth, 1 Title I ELA teacher, 1 Title I math teacher, 1 half-day special education resource teacher, 1 special education emotionally impaired teacher, 1 of each art, music, and physical education teacher, 3 special education aides, 2 Preschool aides, 2 half day kindergarten aides, a part-time speech/language therapist, a part-time school -psychologist, a part-time social worker, 1 Title I ELA interventionist, 1 Title I Math interventionist, 1 truancy abatement clerk, Parent Liaison and contracted custodial and food service staff.

Located in our school is a Pathway to Potential program. This program is a school based Department of Human and Human Services office; it focuses on our ongoing problem of truancy and the barriers our students encounter that keep them from attending school regularly. Pathway to Potential works along with school personnel to help parents identify and access resources that help our children stay in school and learn. In addition, we have a Licensed Professional Counselor with Westlund Guidance Clinic working in conjunction with SPSD to provide mental health services for the students in our school. It is our hope that this collaboration can assist with any challenges and behaviors that may be interfering with the growth and success of students. The role of this counselor is to provide individual, family, and group therapy to any student in the school who will benefit from the extra support.

We are a school where over 80% of our students qualify for free and/or reduced lunch. We have 38 students who receive backpacks of food to take home for the weekend. Our school community struggles with a high poverty rate and consequently, the issues related to poverty.

Our website is: <http://www.spsd.net/merrillpark>

### CORE CURRICULUM

# Merrill Park Elementary School

## 2017–2018 Annual Education Report for 2016–2017 Progress

Dr. Lisa Tran; Principal

The Michigan School Code requires every local school district to establish a core curriculum and an aligned instructional program. Teachers, instructional coaches and administrators have collaborated to address core curriculum requirements by creating overarching questions and essential learning expectations for student, along with assessments and resources for four core content area (English, Social Studies, Science and Math). SPSD obtains the curriculum from the Michigan Association of Intermediate School Administrators (MAISA), which provides college and career readiness units and resources that are aligned with the Michigan standards.

The Core Curriculum can be located on the Saginaw Public School District's website:

- Step 1: Go to [www.spsd.net](http://www.spsd.net)
- Step 2: Click on Departments
- Step 3: Click on Instructional Division
- Step 4: Click on Core Curriculum MAISA units
- Step 5: To view and download the MAISA CCSS units, click on either the SEARCH or BROWSE buttons on the top of the page. You can use the SEARCH feature to find where a certain topic or skill is taught. The BROWSE button allows you to browse by grade level or subject area.

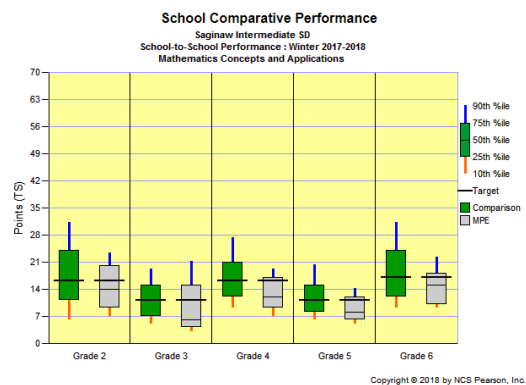
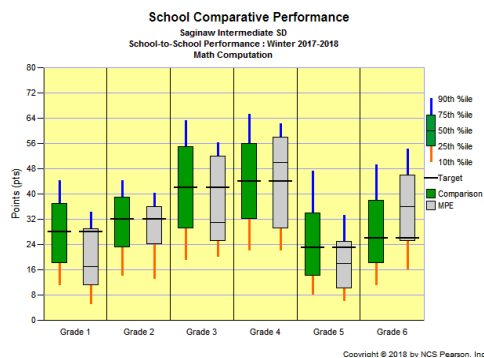
Or, click here: <https://gomaisa-public.rubiconatlas.org/Atlas/Public/View/Default>

### AGGREGATE STUDENT ACHIEVEMENT RESULTS

Here is a link for State student achievement results: <https://goo.gl/RGWS1s>

#### AIMSweb Data:

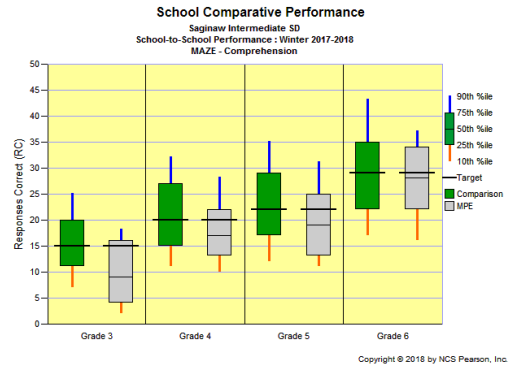
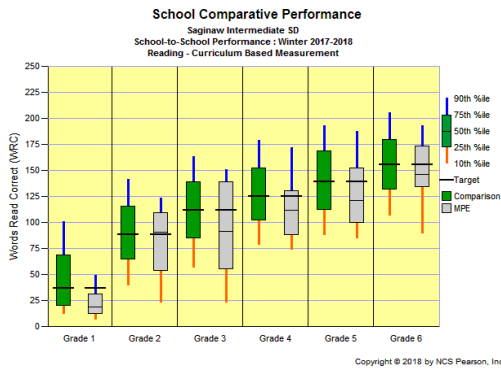
Comparison: AIMSweb National Norms  
Target Sets: AIMSweb National Norms



# Merrill Park Elementary School

## 2017–2018 Annual Education Report for 2016–2017 Progress

Dr. Lisa Tran; Principal



### PARENT-TEACHER CONFERENCES

The percentage of parents attending our Fall parent teacher conferences was 90%. Spring conferences was 57%, however our parent attendance was low due to inclement weather.

Congratulations and thanks to everyone involved in the success of our students at Merrill Park Elementary. We take our role in educating your child(ren) seriously. It takes a community to create, inspire, and mold our kids into productive citizens of tomorrow. Our accomplishments are the result of the hard work and commitment of students, teachers, support staff, and various community partnerships. By working together we are closer to achieving our goals. As we look to the future, I thank you for the continued support from everyone involved to help us reach our goals that meet the needs of the whole child and provide our students with the best opportunities to reach their highest potential and promising future.

Sincerely,

Dr. Lisa Tran  
Principal